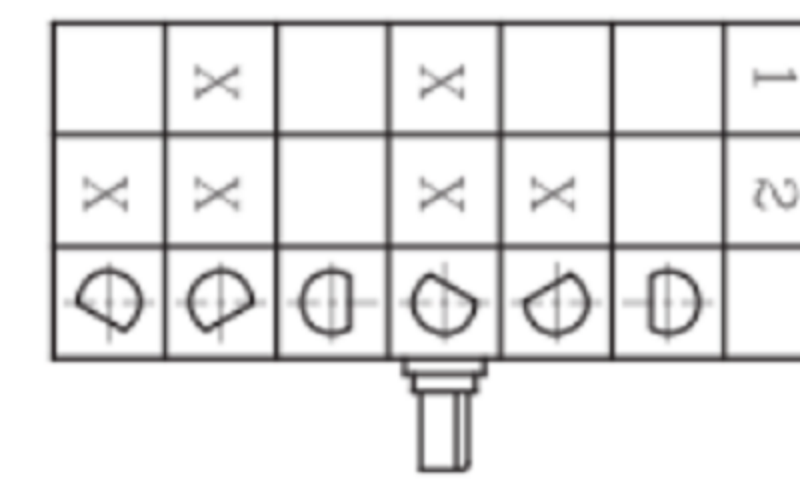


1POLE 6 POSITIONS  
FUNCTION 3



**SPECIFICATION 規格:**

**Rating 額定:**

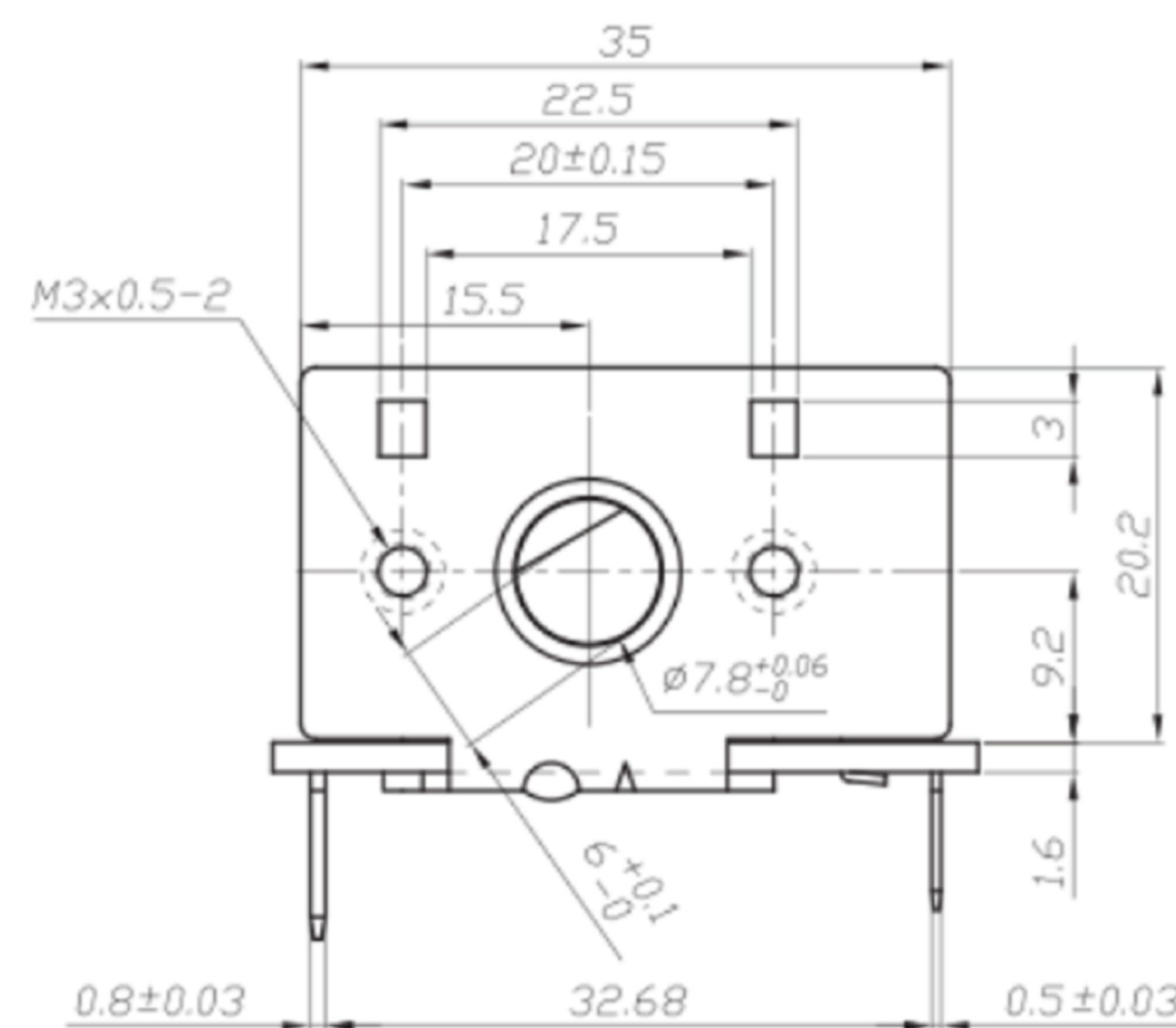
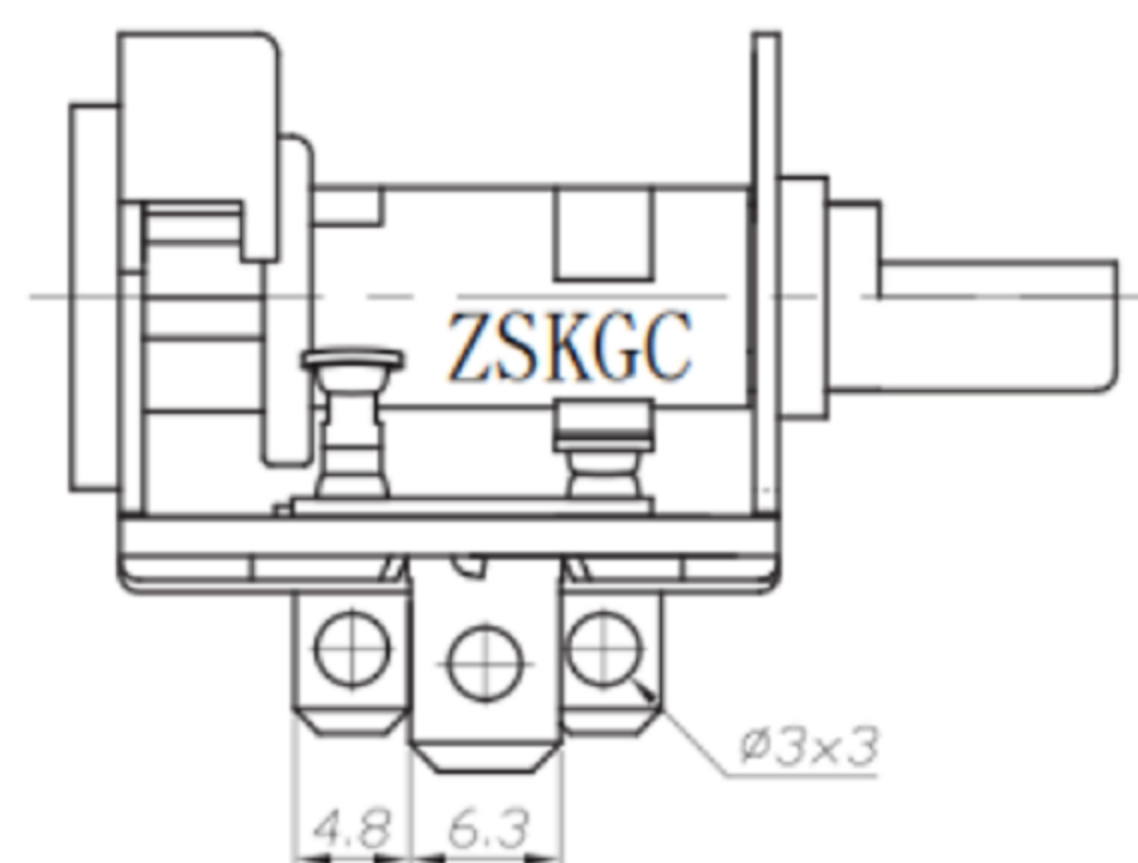
- 16A 125VAC (CQC)
- 12A 250VAC (CQC)

**Electrical (電氣性能)**

- (接觸電阻) INITIAL CONTACT RESISTANCE: 50mΩ Max
- (操作力量) OPERATION FORCE: 750-1500gf
- (絕緣電阻) INSULATION RESISTANCE: 100MΩ Min 500VDC
- (耐電壓) WITHSTAND VOLTAGE: 1500VAC FOR 1 MINUTE
- (電氣壽命) ENDURANCE: 10,000 CYCLES

**Material (材質)**

- (柄) ACTUATOR: PA66+30%GF/PBT+30%GF (UL 94V-0)
- (電木板) BASE: PHENOLIC LAMINATE (UL 94V-0)
- (鐵殼) BRACKET: SPCC ZINC PLATED
- (端子) TERMINAL: COPPER ALLOY
- (接點) CONTACT: SILVER ALLOY



**東莞市高迪電子有限公司**  
DONG GUAN GAO DI ELECTRONICS CO., LTD

TOLERANCE UNLESS OTHERWISE STATED:  
Up to 5 ±0.2  
Above 5 ~ 15 ±0.3  
Above 15 ~ 30 ±0.4  
Above 30 ~ 50 ±0.5  
Angle ±0.3°

3RD. ANGEL'S

UNITS MM

DRAWN BY: DATE  
Ming Ming Zou 10/31/13

CHECKED BY: DATE  
Ning Ning Su 10/31/13

APPROVED BY: DATE  
Jia Xiang 10/31/13

MAT'L		TITLE	SWITCH
FINISH		MODLE	MICRO SWITCH
SCALE	1:1	DWG NO.	GD-HR31-N62A-1PS
SHEET NO.	1 of 1	PART NO.	

ITEM NO.	DESCRIPTION	DRAWN	DATE